

SoftShield[®] and Computer Systems Requirements

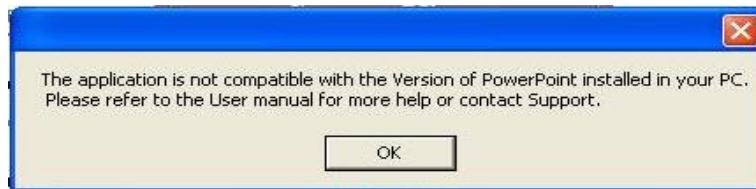
Each VisualEdge Presentation CD is protected by SoftShield[®] [www.softshield.com] and compatible with the following Operating Systems:

OPERATING SYSTEMS SUPPORTED	OFFICE EDITION SUPPORTED
Windows 2000 Service Pack 3	PowerPoint 2000
Windows 98 & 98/Second Edition	PowerPoint 2002 (limited editions)
Windows ME	Version 10.2623.2625
Windows Server 2003	PowerPoint 2003
Windows XP Service Pack 2 & 3	PowerPoint 2007
Windows Vista Service Pack 1	
Windows 7	

SoftShield[®] currently only supports Microsoft Windows operating systems (Windows XP and Vista, etc.) and Microsoft PowerPoint[®] format.

SoftShield[®] is not Mac compatible and will not work with Open-Office based formats.

If you are unsure about compatibility, go to www.softshield.com and click "Support" to request technical support. If SoftShield[®] is not compatible on your PC, the following error message will appear:



Please contact QMI with any questions:

Phone: (503) 233-1784
Email: admin@visualworkplace.com

Or contact SoftShield[®] directly:

Phone: (303) 984-6165
Email: info@soft-shield.com